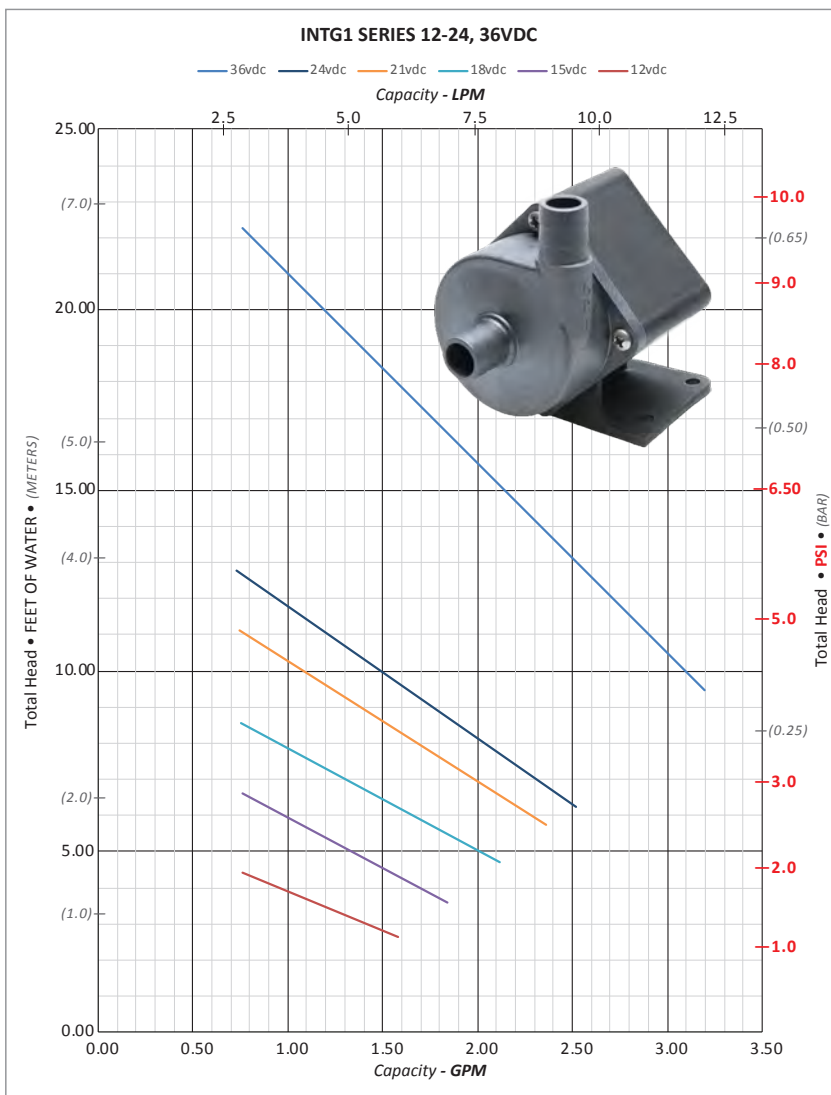


INTG1 Series • Maximum flow per voltage

Voltage	Flow (GPM)	Flow (L)	Ttl. Hd. (Ft)	Ttl. Hd. (PSI)	Ttl. Hd. (BAR)	Ttl. Hd. (M)
36vdc	3.20	12.10	9.49	4.11	0.28	2.89
24vdc	2.52	9.55	6.26	2.71	0.19	1.91
21vdc	2.36	8.92	5.76	2.50	0.17	1.76
18vdc	2.12	8.02	4.73	2.05	0.14	1.44
15vdc	1.84	6.98	3.58	1.55	0.11	1.09
12vdc	1.58	5.98	2.65	1.15	0.08	0.81



Note: Testing performed in a controlled laboratory environment. Actual performance may vary (+) or (-) 10% from the information shown.

Do Not Run Pumps Dry. Pumps must be in a continuous flooded suction environment.

Specifications

Maximum System Pressure: 50 psi

Approximate Weight: .8 LBS (362.9 grams)

Ports: 1/2" MHB, 3/8" MPT

OEM Customization Available

Materials In Contact With Solution

Body: PPS	Impeller Shaft: Stainless Steel or Ceramic
Impeller: PPS	Housing: PPS
Static O-Ring: EPDM, FKM	

Motor Specifications

Motor: Integrated, Brushless DC

Supply Voltage: 12-36 VDC

Electronics Maximum Power: 18 Watts

To protect the control board, each Integrity Series pump will be issued with a Maximum Power limit (Watts). To stay within this limit, the recommended fuse size (Amps) will be based on the voltage supplied. (Watts = Voltage X Amps)

Control Options

- **Direct Supply Voltage:** Speed of the pump determined by the voltage supplied
- **Analog:** 0-5v DC signal
- **Tachometer:** Feedback option available

Maximum Fluid Rating Chart

Controller Position	Maximum Fluid Temp Rating
Separate from pump	Not Applicable
Within pump's housing	149°F (65°C)

Various factors influence the recommended maximum temperature rating. These factors play a role in determining the pump's life and applied warranties. In some applications, a higher maximum fluid temperature rating may be warranted.

Factors influencing maximum temperature rating include, but are not limited to:

- Starting temperature of fluid in system
- Ambient temperature
- Required performance, application's specifications
- Run time

Optional Agency Approvals

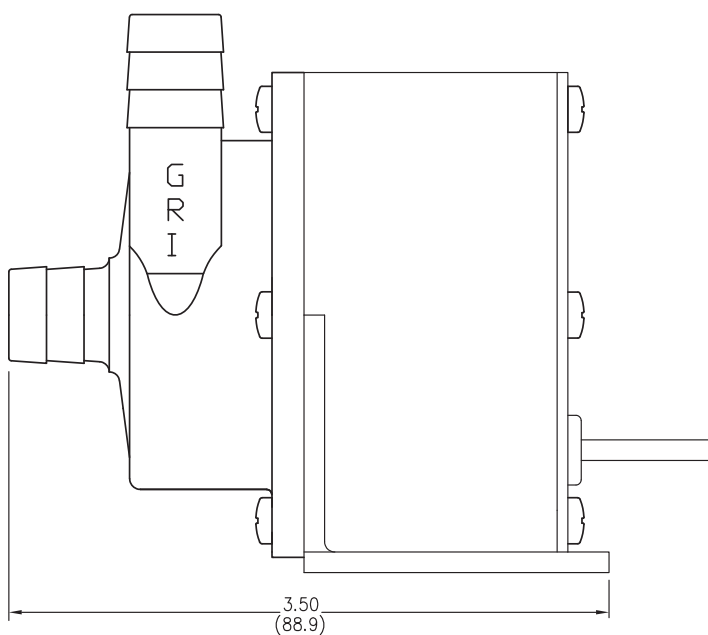
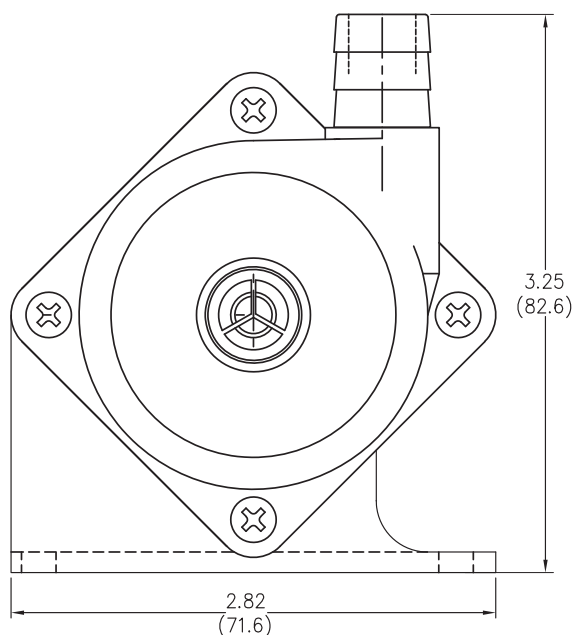
UL778: Motor-Operated Water Pumps

NSF 61: Potable Water

NSF 169: Food Grade

RoHS/REACH

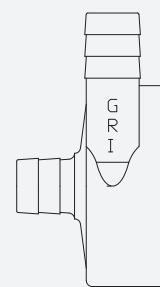
Many GRI pumps are RoHS & REACH compliant. For declarations by specific model numbers, please contact GRI.



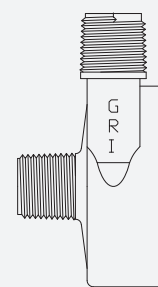
INTG1 Series Typical Dimensional Drawing.

Many other OEM port options and configurations are available. Please contact GRI to discuss.

Port Options



1/2" MHB



3/8" MPT

INTG1 SERIES MODELS				Ports Inches	Max Flow GPM (LPM)	Max Head Ft. (PSI) (m)	Voltage
EPDM O-Ring		FKM O-Ring					
2 wire	3 wire	2 wire	3 wire				
INTG1S-280	INTG1S-380	INTG1S-281	INTG1S-381	1/2 MHB	2.50 (9.50)	12.80 (5.5) (3.90)	12-24
INTG1S-284	INTG1S-384	INTG1S-285	INTG1S-385	3/8 MPT			
3-wire: Attaching a 0-5v DC or PWM input signal to the third wire gives the ability to adjust voltage and speed of the pump. If the third wire is not connected, the pump will run full-on. Connectors: MHB = Male Hose Barb; MPT = Male Pipe Thread O-Ring Material: EPDM = Ethylene Propylene Diene Monomer, FKM = Fluoroelastomer.							

Integrity Series Pumps are designed and manufactured specifically for OEM customization. If you don't immediately find a pump that meets your exact requirements, our dedicated Pump Team is ready to work with you in developing a solution specific to your application.